

U740D, U750D

Application Specifications

Recommended Longitudinals	U740D 5" 6.7 lb. Channel	U750D 5" 6.7 lb. Channel
Recommended Crossmembers	4" 4.5 Channel	4" 4.5 lb. Channel

Hoist:

NTEA Class	40	50
Max. Lifting Capacity*	34,600 lbs.	34,600 lbs.
Subframe	1/4" Steel Channel	1/4" Steel Channel
Pivot Shaft	2"	2"
Mounting Height	14-1/2"	14-1/2"
Standard Pivot	12"	12"
Standard Dump Angle	50 Degrees	50 Degrees
Weight**	796 lbs.	796 lbs.
Oil Reservoir Capacity	8.5 Gallons	8.5 Gallons

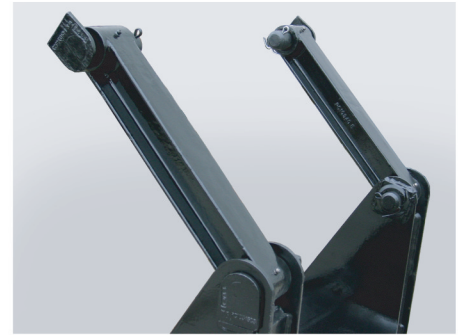
Cylinder:

Bore	8.00"	8.00"
Stroke	20"	20"
Displacement	770 cu. in.	770 cu. in.
Piston Rod Diameter	2.5"	2.5"
Operating Pressure	1800 PSI.	2300 PSI.

*Governed by body length and pivot.

**Includes all mounting equipment

Both hoists available
Double Acting



Shown is the heavy duty cast lift arms. These arms easily attach directly to the body using 4140 grade, 1 1/2" hinge pins. The arms have easily accessible zerker grease fittings.



This hoist is easily installed on the trucks chassis using extra heavy duty 4140 grade cast mounting brackets, with 12 grade 8 bolts and minimal welding. Installation is quick and easy.

Available Components



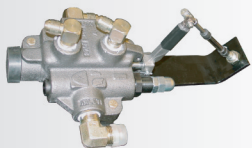
The G102D pump/valve combination direct mount gear pump does not require a drive line thus making it safer and more dependable. This pump has an S.A.E. "B" 2-bolt flange. 15 GPM @1200 RPM Available with "ccw" or "cc" rotation



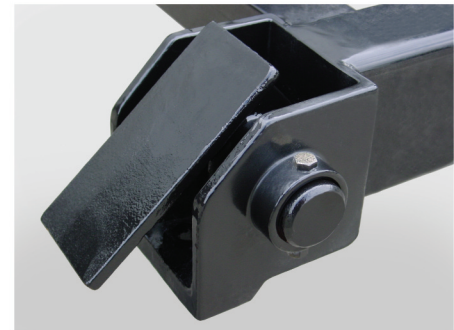
The P22 direct gear pump is bi-rotational with side and rear ports for versatility, thus eliminating the drive line for added safety and dependability. This pump has an S.A.E. "B" 2-bolt flange. 15 GPM @1200 RPM



The 8.5 gallon box type reservoir is designed to be frame mounted. It hangs out of the way and is equipped with a brass wire mesh suction strainer, oil level & temperature gauge.



The SP4 valve with cable and lever control is used in conjunction with the P22 pump. This valve is easy to install and makes the hydraulic system double acting.



The hinges are cast from extra heavy duty 4140 grade steel to ensure durability. Adding to the ease of installation and durability, these hinges are welded directly to the body's main runners.